

LEGEND	
+	FOUND MONUMENT AS NOTED
○	FOUND REBAR & CAP STAMPED: NWG 22963
×	CALCULATED POINT NOT SET OR FOUND
●	SET 5/8" REBAR & CAP: STAMPED CDI 42697
⊙	SET 5/8" REBAR & CAP IN MON CASE: STAMPED CDI 42697 (MONUMENTS TO BE SET FOLLOWING CONSTRUCTION)
△	EASEMENT EXCEPTION
□	EASEMENT NOTE
⊕	WELL
—	ADDRESS
---	RIGHT OF WAY
---	MONUMENTED CENTER LINE
---	SECTION LINE
---	EXISTING EASEMENT
---	DEDICATED EASEMENT

PARCEL LINE TABLE		
LINE #	DIRECTION	LENGTH
L-1	N 0°31'22" E	150.87'
L-2	S 87°21'13" W	57.39'
L-3	S 87°04'25" W	57.88'
L-4	S 58°27'28" W	70.97'
L-5	N 0°26'11" E	17.68'
L-6	N 0°31'22" E	107.12'
L-7	N 47°36'23" E	15.88'
L-8	N 16°22'40" W	62.12'
L-9	N 7°03'17" W	27.96'
L-10	N 76°54'58" E	57.02'
L-11	N 76°22'46" E	52.25'
L-12	N 84°38'00" E	19.18'
L-13	N 88°41'51" E	62.00'
L-14	S 55°31'26" E	113.74'
L-15	S 89°57'23" E	8.72'
L-24	S 0°26'11" W	58.95'

PARCEL CURVE TABLE					
CURVE	RADIUS	DELTA	LENGTH	COURSE	CHORD
C-1	25.00'	21°52'05"	9.54'	N 81°42'45" W	9.48'
C-2	25.00'	28°36'57"	12.49'	N 72°45'57" E	12.36'
C-3	11574.48'	3°48'31"	769.41'	S 60°24'20" W	769.27'
C-4	86.00'	4°23'23"	6.59'	S 44°31'44" E	6.59'
C-5	20.00'	85°40'12"	29.90'	S 89°33'31" E	27.20'
C-6	164.00'	9°59'03"	28.58'	S 52°35'54" W	28.54'
C-7	164.00'	24°36'25"	70.43'	S 69°53'38" W	69.89'
C-8	164.00'	12°16'54"	35.15'	S 88°20'17" W	35.09'
C-9	305.00'	8°24'04"	44.72'	N 89°43'18" W	44.68'
C-10	305.00'	16°13'39"	86.38'	S 77°57'51" W	86.10'
C-11	305.00'	13°12'28"	70.31'	S 63°14'47" W	70.15'
C-12	305.00'	13°24'13"	71.35'	S 49°56'27" W	71.19'
C-13	305.00'	5°22'39"	28.63'	S 40°33'00" W	28.62'
C-14	315.00'	8°14'55"	45.35'	S 41°59'08" W	45.31'
C-15	315.00'	17°10'21"	94.41'	S 54°41'46" W	94.06'
C-16	315.00'	17°43'33"	97.45'	S 72°08'43" W	97.06'
C-17	315.00'	6°54'20"	37.96'	S 84°27'39" W	37.94'

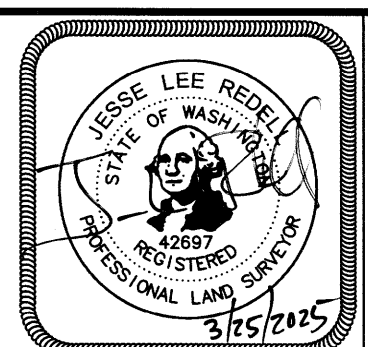
PARCEL CURVE TABLE					
CURVE	RADIUS	DELTA	LENGTH	COURSE	CHORD
C-18	209.00'	10°33'24"	38.51'	S 82°38'07" W	38.45'
C-19	209.00'	20°42'19"	75.53'	S 67°00'16" W	75.12'
C-20	209.00'	30°49'47"	112.46'	S 41°14'13" W	111.11'
C-21	209.00'	30°42'12"	112.00'	S 10°28'14" W	110.66'
C-22	209.00'	8°31'34"	31.10'	S 9°08'39" E	31.07'
C-23	529.00'	6°49'50"	63.07'	S 9°59'31" E	63.03'
C-24	529.00'	2°26'28"	22.54'	S 5°21'22" E	22.54'
C-25	25.00'	63°31'02"	27.71'	S 35°53'39" E	26.32'
C-26	53.00'	64°37'20"	59.78'	S 35°20'30" E	56.66'
C-27	68.50'	26°49'12"	32.06'	S 10°22'46" W	31.77'
C-28	68.50'	36°37'15"	43.78'	S 42°06'00" W	43.04'
C-29	68.50'	29°00'06"	34.67'	S 74°54'41" W	34.30'
C-30	43.50'	39°55'25"	30.31'	N 70°37'34" W	29.70'
C-31	65.07'	22°17'58"	25.33'	S 78°58'05" W	25.17'

Sheet 3 OF 8	Job No : 20122	
	Issue	Drawn Date
	FINAL MYLAR	3.25.2025

Rocky Pond Resort Residences LLC  
 116 Orchard Place  
 Orondo, Wa. 98843

**ROCKY POND RESORT RESIDENCES**  
 SUBDIVISION P-2022-08  
 A COMMON INTEREST PLAT COMMUNITY  
 T. 26 N. R. 21 E.W.M.  
 PORTION OF GOVERNMENT LOT 4  
 SECTION 12  
 DOUGLAS COUNTY, WASHINGTON

\$458.50  
 A.F.N. 3274353



**COMPLETE DESIGN INC.**  
 "Construction Design Specialists"  
 PO Box 1914  
 Wenatchee, WA. 98807  
 www.completedesign.com  
 contact@completedesign.com  
 509.662.3699