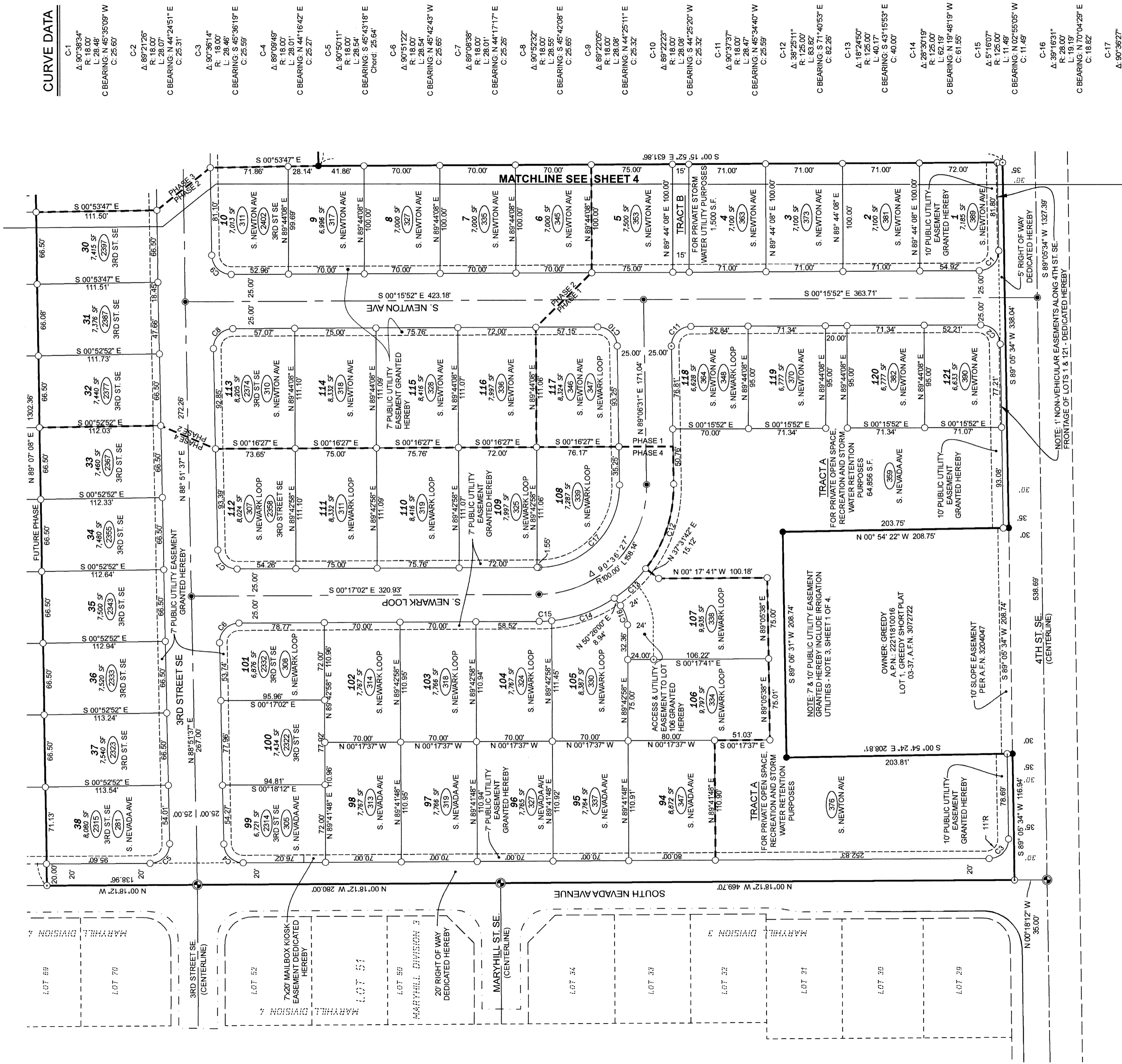


MARYHILL ESTATES EAST

DIVISION 1 - PHASES 1 - 4 (P-2019-06)

A PORTION OF LOT 1, GRANT ROAD SHORT PLAT; WITHIN A PORTION OF THE SE1/4 OF THE NE1/4 OF SEC. 18, T.22N., R.21E.W.M., DOUGLAS COUNTY, WA



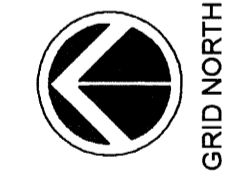
CURVE DATA

- C-1
Δ: 90°38'34"
R: 18.00'
L: 28.48'
C BEARING: N 45°35'09" W
C: 25.60'
- C-2
Δ: 89°21'26"
R: 18.00'
L: 28.07'
C BEARING: N 44°24'51" E
C: 25.31'
- C-3
Δ: 90°36'14"
R: 18.00'
L: 28.46'
C BEARING: S 45°36'19" E
C: 25.59'
- C-4
Δ: 89°09'49"
R: 18.00'
L: 28.01'
C BEARING: N 44°16'42" E
C: 25.27'
- C-5
Δ: 90°50'11"
R: 18.00'
L: 28.54'
C BEARING: S 45°43'18" E
Chord: 25.64'
- C-6
Δ: 90°51'22"
R: 18.00'
L: 28.54'
C BEARING: N 44°42'43" W
C: 25.65'
- C-7
Δ: 89°08'38"
R: 18.00'
L: 28.01'
C BEARING: N 44°17'17" E
C: 25.26'
- C-8
Δ: 90°52'32"
R: 18.00'
L: 28.55'
C BEARING: S 45°42'08" E
C: 25.65'
- C-9
Δ: 89°22'05"
R: 18.00'
L: 28.08'
C BEARING: N 44°25'11" E
C: 25.32'
- C-10
Δ: 89°22'23"
R: 18.00'
L: 28.08'
C BEARING: S 44°25'20" W
C: 25.32'
- C-11
Δ: 90°37'37"
R: 18.00'
L: 28.47'
C BEARING: N 45°34'40" W
C: 25.59'
- C-12
Δ: 39°25'11"
R: 125.00'
L: 83.82'
C BEARING: S 71°40'53" E
C: 82.26'
- C-13
Δ: 18°24'50"
R: 125.00'
L: 40.17'
C BEARING: S 43°15'53" E
C: 40.00'
- C-14
Δ: 28°30'19"
R: 125.00'
L: 62.18'
C BEARING: N 18°48'19" W
C: 61.55'
- C-15
Δ: 5°16'07"
R: 125.00'
L: 11.49'
C BEARING: N 02°55'05" W
C: 11.49'
- C-16
Δ: 39°16'31"
R: 28.00'
L: 18.19'
C BEARING: N 70°04'29" E
C: 18.82'
- C-17
Δ: 90°36'27"
R: 75.00'
L: 118.61'
C BEARING: S 45°35'15" E
C: 106.63'

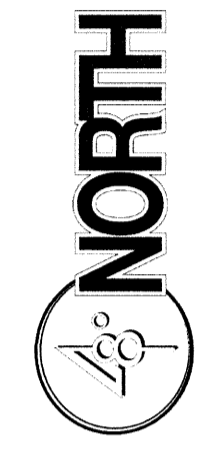
AUDITOR'S INDEX SKETCH

NW	NE	NW	NE	NW	NE	NW	NE
SW	NW	SE	NW	SE	NW	SE	NW
NW	SW	NW	SE	NW	SE	NW	SE
SW	SW	SW	SE	SW	SE	SW	SE

SECTION 18, T.22N., R.21E., W.M., DOUGLAS COUNTY, WA



GRID NORTH
SCALE: 1" = 60'



PROFESSIONAL LAND SURVEYING &
LAND USE CONSULTING
P.O. Box 4266 WENATCHEE, WA 98807-04266
Phone: (509) 436-1640
48dnorth.com

A.F.N. 3259150

DATE: OCTOBER 24, 2022
DRAWING: 19-050 MARYHILL EAST PLAT S 3_4.DWG
DRAWN BY: EBG/JBV
PROJECT: 19-050